

I, Louise V. Isaacs, Clerk of the Circuit Court of Martin County, Florida, hereby certify that this plat was filed for record in Plat Book 9, Page 22, Martin County, Florida, public records this day of _____, 1982.

LOUISE V. ISAACS, CLERK
CIRCUIT COURT
MARTIN COUNTY, FLORIDA
BY: _____
Deputy Clerk

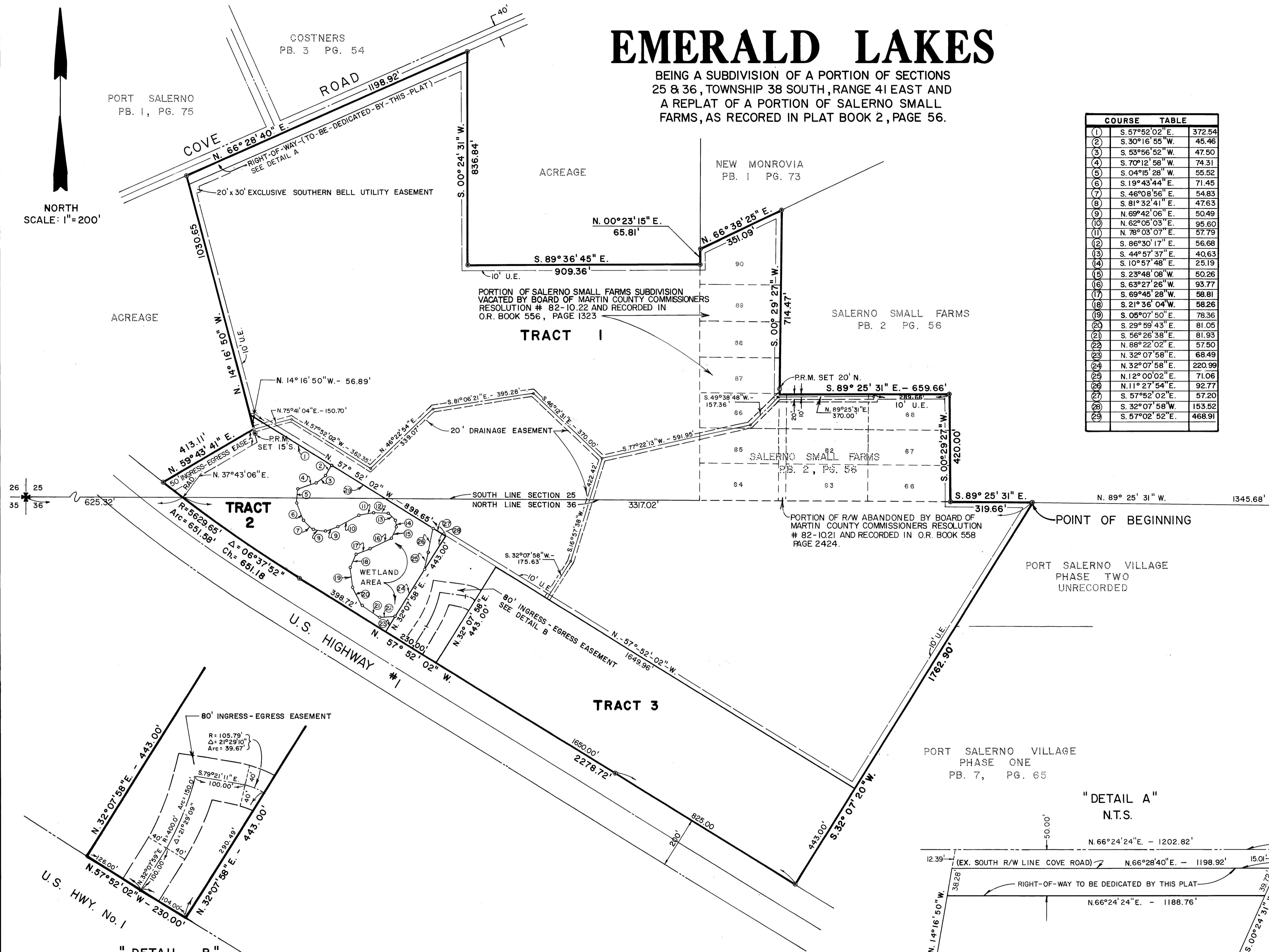
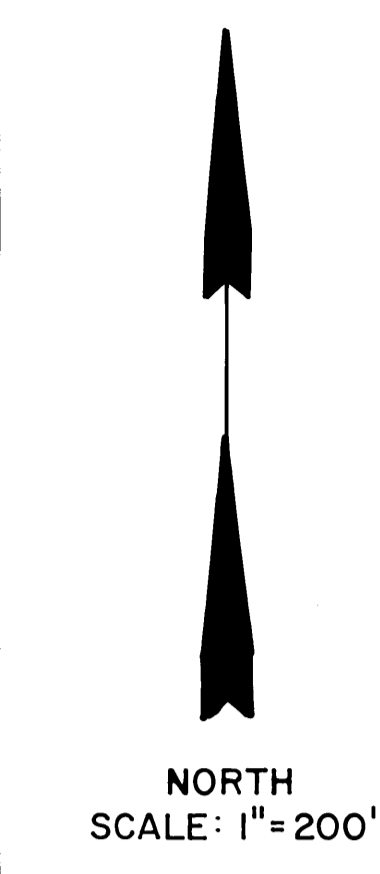
File No. _____

THIS INSTRUMENT PREPARED BY:
LEO E. NOBLE R.L.S. 3143 STATE OF FLORIDA
LAWSON & NOBLE, INC.
ENGINEERS-PLANNERS-SURVEYORS
WEST PALM BEACH, FLORIDA

EMERALD LAKES

BEING A SUBDIVISION OF A PORTION OF SECTIONS 25 & 36, TOWNSHIP 38 SOUTH, RANGE 41 EAST AND A REPLAT OF A PORTION OF SALERNO SMALL FARMS, AS RECORDED IN PLAT BOOK 2, PAGE 56.

COURSE TABLE		
(1)	S. 57°52'02" E.	372.54
(2)	S. 30°16'55" W.	45.46
(3)	S. 53°56'52" W.	47.50
(4)	S. 70°12'58" W.	74.31
(5)	S. 04°16'28" W.	55.52
(6)	S. 19°43'44" E.	71.45
(7)	S. 46°08'56" E.	54.83
(8)	S. 81°32'41" E.	47.63
(9)	N. 69°42'06" E.	50.49
(10)	N. 62°05'03" E.	95.60
(11)	N. 78°03'07" E.	57.79
(12)	S. 86°30'17" E.	56.68
(13)	S. 44°57'37" E.	40.63
(14)	S. 10°57'48" E.	25.19
(15)	S. 23°48'08" W.	50.26
(16)	S. 63°27'26" W.	93.77
(17)	S. 69°45'28" W.	58.81
(18)	S. 21°36'04" W.	58.26
(19)	S. 05°07'50" E.	78.36
(20)	S. 29°59'43" E.	81.05
(21)	S. 56°26'38" E.	81.93
(22)	N. 88°22'02" E.	57.50
(23)	N. 32°07'58" E.	68.49
(24)	N. 32°07'58" E.	220.99
(25)	N. 12°00'02" E.	71.06
(26)	N. 11°27'54" E.	92.77
(27)	S. 57°52'02" E.	57.20
(28)	S. 32°07'58" W.	153.52
(29)	S. 57°02'52" E.	468.91



No alterations will occur within the Wetland Area shown on Tract 2 without permission from the Martin County Commission.

⊙ Denotes Permanent Reference Monument (P.R.M.)

U.E. Denotes Utility Easement

Bearings shown hereon refer to an assumed bearing based on the south line of Section 25, Township 38 S., Range 41 E.